

# Tree Tops - *President's Message*

By **Eli Hassid**, HOA Board President

Dear Community,

Fall is around the corner and that means cooler weather is right there too. It is my favorite time of the year as the air feels crisp and the leaves begin to change colors. As we all remember, when the leaves finish turning, they begin to accumulate on our yards; please be courteous to your neighbors and properly dispose of your leaves.

Continuing with the topic of the fall season brings me to the annual DuFief picnic. I hope you will be able to attend this year. If you or any of your neighbors needs assistance getting down the path to the pond, please notify the Board and someone will be able to drive you down to the picnic.

Have you noticed the new and much improved sign that was installed at the entrance to the pond? A "Thank you" to Pam Weld for donating her time to arrange first for its design and then its installation.

Some residents have started to see WSSC working on laying new water pipes in the community. This project will be happening in phases over at least a year. For any questions or comments you may have about this project, please call WSSC's Civil Engineering Coordinators David Venanzi at 301-206-8556 or Mark Allman at 301-206-8557. As we continue to make improvements to the community, we will send updates to everyone and post them on our website: [www.dufief.org](http://www.dufief.org).

Have a great Fall, and I hope to see you at the annual picnic.

Warm regards,  
Eli Hassid



## 2017 DuFief Community Picnic

**SAVE THE DATE:**      **Saturday, September 23, 2017**  
**1:00 pm – 4:00 pm**

**RAIN DATE:**              **Saturday, October 7, 2016**  
**1:00 pm – 4:00 pm**

*Gather the family, come join your neighbors,  
and celebrate DuFief at our community pond!*

**SET-UP AND CLEAN-UP HELP WELCOME!**

Please contact Nathalie Noon at [nathalienoon@gmail.com](mailto:nathalienoon@gmail.com)

**Transportation from Coles Chance Road down to the pond will be available upon request.**

**Inside this issue:**

DuFief President's Message	1
Quilting in DuFief	2
DuFief Treasurer's Report	3
ARC Affairs	5
Women's March	7

**Special points of interest:**

- *Artist in Residence Column*
- *Mail Box Maintenance*
- *Contribution by Middle School Student*

## Artist in Residence — Quilting in DuFief

by **Martha Minten**

Hi Everyone! I am Martha Minten, a neighborhood quilter. A couple of weeks ago, Linde Fuller stopped by my house to see if I would write an article for the Artist-in-Residence section of the Readwood. I tried to get out of it, but as you see, it didn't work.

Around 1990, a friend and I decided to take a quilting class. Since that time, I have made many quilts of various sizes and designs. Most of them I have given away to my children, grandchildren and friends as wedding, birth, or graduation gifts. Several quilts have also been donated to hospitals for children with cancer.



**Ethan Koch**

Quilts are not difficult to make, especially if done like the quilts I make. My quilts are completely machine-quilted and are made using patterns from different books that I have acquired through the years. The basic materials for quilting are: a sewing machine, a rotary cutter, a mat and ruler. Two machine feet – a ¼-inch foot and a walking foot – are helpful but not absolutely necessary.



**Sarah Levine**

To make a quilt one must first find the pattern one wants by looking through quilting books. The books have the quilt designs and each design tells you the amount of material needed, how to cut the parts and how to sew the design together. Once the top is made,

it is layered with batting and a backing. The three layers are then sewn together. The material used is almost always 100% cotton and is washed before cutting. The batting comes in cotton and in polyester and can be purchased in different thicknesses. The backing may be made with a matching fabric from the front or can be a neutral color depending on its use. There are three nearby stores where fabric and books can be purchased: Capital Quilts, JoAnne's and Walmart. Quilting is fun, relaxing and can be a start-stop-start again activity.



**Katrina Garzon**

Quilts can be made by people of all ages. As some of our neighbors know, for many years I provided family day care for school-aged children. Through the years, almost all of the 4<sup>th</sup> and 5<sup>th</sup> graders that came to my house were given the opportunity to make a quilt or a quilted pillow. Both, the boys and the girls, made one or more quilts each and several entered them in the County Fair. All entries earned a ribbon and a couple received a monetary award for outstanding work.



**Griffin Ford**

continued on page 3



In Montgomery County, there are several quilting clubs, which invite people of different levels of ability to join. They are helpful in answering any questions one might have. Quilting classes are also available at fabric stores such as “Capital Quilts.”

If any of you would like to get started, you could come and see me and I could show or teach you some of the basics.

Should you ever decide to become a quilter, be sure to take a picture of each quilt along with the date the quilt was completed. It could turn into an heirloom. And in the meantime, you would have a lot of fun making it.



## Treasurer's Report on Annual Assessments

by **Brian Frank**, *Dufief HOA Treasurer*

**BIG NEWS!!!! WE ARE GOING ELECTRONIC!!!**

**Homeowners who wish to pay their assessment by Bank Transfer will be able to do so.  
Invoices will be sent via email with a link to pay online.**

**If you have not provided us with an email address, your invoice will be sent by first-class mail.**

As of August 29, 2017, the Board has collected annual dues from 290 of the 306 homes in our neighborhood (roughly 94.8%). The annual assessments that we use to maintain our common areas in order to keep the DuFief neighborhood a popular area for homebuyers **ARE NOT OPTIONAL**. Every household must pay the annual dues. The original notice for 2017 dues was sent to all homeowners at the beginning of January 2017. Follow-up invoices were sent in March and again in July/August.

Any homeowners who have not paid their dues are subject to potential lawsuit, which will include a request for interest and attorneys fees and may result in a lien on the property.

We have been very successful in collecting dues. All assessments have been collected for 2010 and all years prior. There is one homeowner who has not paid dues for 2011, 2012, 2013 and 2014 and two homeowners who still owe for 2015 and seven homes that have not paid 2016 dues.

The Board does not enjoy having to take neighbors to court. However, the homeowner assessments are not any different from having to pay real estate taxes on your property.

To those of you who have paid your annual assessments in a timely manner, “THANK YOU”. For those of you who have not yet paid the 2017 dues in the amount of \$201.57, please do so as soon as possible in order to avoid additional costs, and a potential lawsuit.

If you have questions or would like to discuss your annual assessments, please feel free to contact me at 240-606-5100.

**Brian Frank**

**We have collected  
94.8% of 2017 dues.**

## New Board Members—*Introductions*

Two new Board member—**Oksana Klebs** and **Keith Shenk**— were elected to the DuFief Board at the Annual HOA Meeting in February. **Nathalie Noon**, who had been serving as Secretary, agreed to assume the duties of Vice President and Oksana agreed to succeed her as Secretary.

### **OKSANA KLEBS, Secretary**

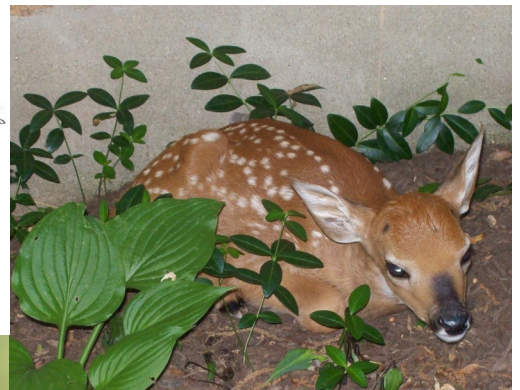
Hi! My name is Oksana Klebs. My family and I moved to DuFief in 2014. In addition to my full-time job at The Library of Congress and raising a teenager, I try to find time for gardening, cooking and socializing with close friends. I am an advocate for community improvements, such as re-paving the roads and making sure common areas are accessible to the disabled. My passion to support people with disabilities is very close to my heart as I have recently lost my husband to ALS. I am new to the Board, but will do what I can to help make the DuFief community an even better place to live and to raise a family.

### **KEITH SHENK, Board Member**

My wife Tania and I have lived in the Dufief neighborhood for over ten years. I myself have lived in Montgomery County my whole life. We have four children and are very busy with the many activities our children bring us. Tania is an English teacher at a local Middle School and I work as a Residential Real Estate agent with REMAX Town Center at Park Potomac, concentrating on the Potomac-North Potomac-Rockville-Gaithersburg area. We enjoy spending our free time (!) with our family, friends and our two dogs.

Many thanks to departing member John Su for his long-time service on the Board. Thanks also to Al Fier for his past service as Board member and Vice President. A “Thank-you” to Molly Diamond for her pre-publication review of every single Readwood. Molly and her husband David , who are original owners, will be moving to Pennsylvania shortly.

We look forward to working with Nathalie Noon as our new Vice President and the two newly elected Board members Oksana Klebs and Keith Shenk.



*Photos Courtesy of*  
David Heiser, George Candler , and  
Laura Huff.

*Drawings by*  
Molly Dianond

## ARC Affairs—Every Month is Mailbox Maintenance Month

Please look at your mailbox and ask yourself:

### **1. Do your mailbox and its support adhere to the relevant guidelines of the USPS and the State Highway Administration (SHA)?**

#### **Mailbox:**

- Position your mailbox 41" to 45" from the road surface to the bottom of the mailbox or point of mail entry.
- Place your mailbox 6" to 8" back from the curb.
- Put your house number on the mailbox.

#### **Support:**

The best mailbox posts are stable but bend or fall away if a car hits them. The SHA recommends:

- A 4" x 4" wooden support. Avoid unyielding and potentially dangerous supports, like heavy metal pipes or concrete posts (which would not be allowed under the DuFief ARC guidelines anyhow).
- Bury your post no more than 24" deep.

### **2. Does your mailbox design comply with the DuFief ARC guidelines?**

The DuFief ARC guidelines prescribe wood-enclosed mailboxes, in harmony with the wood-sided homes. Mailboxes A, B and C are recommended mailbox styles that are in use in the neighborhood.



**Mailbox A**



**Mailbox B**



**Mailbox C**

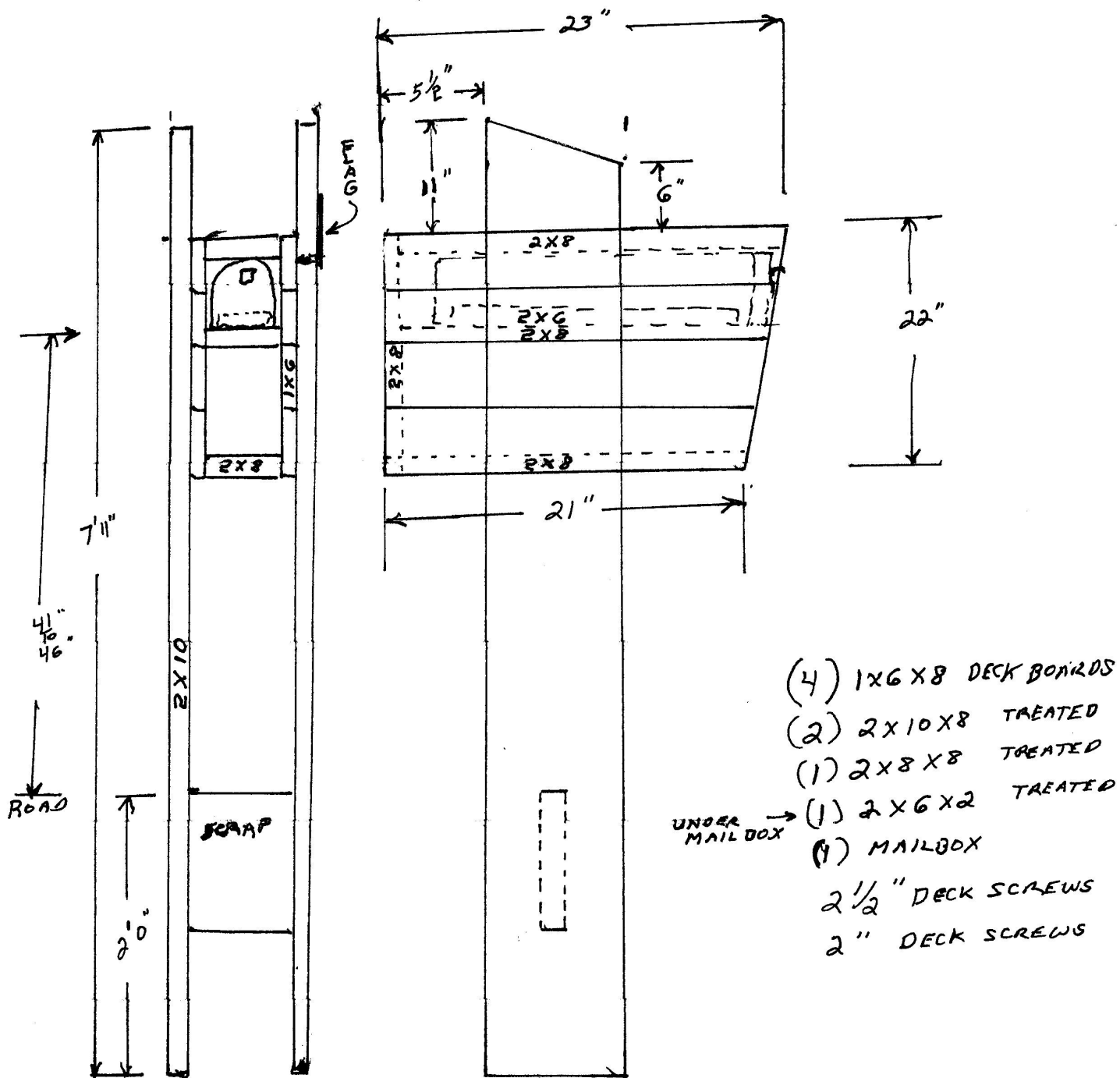
Page 6 shows the design for Mailbox A, which seems to be the most popular mailbox in DuFief. The sketch gives the measurements that might help you build the mailbox yourself or have it built by someone else. Harold Minten (301-424-4693), who used this design in the past, is willing to answer any questions you may have.

**Before doing exterior work to your home, please go to**

**[www.dufief.org](http://www.dufief.org) Architectural Review**

**to apply for prior written approval for additions, alterations, and/or improvements.**

NOT TO SCALE



MAILBOX BOTTOM SHOULD BE 41" TO 46" ABOVE THE ROAD

# 2017 Women's March on Washington: An Empowering Phenomenon

by Hana Frank

*Hana is 12 years old and a 7th-grader at Robert Frost Middle School. She and her mother Sondra Frank participated in the Women's March in Washington, DC, in January. Here are Hana's thoughts on it:*



*Aerial shot of Woman's March (New York Times, 1/22/2017)*

Swarming like ants, more than 500,000 people attended the Washington D.C. Women's March, strategically planned to take place the day after President Trump was inaugurated. While this protest of Trump's presidency was started as an effort to raise awareness of the threat to women's rights, it evolved into a worldwide endeavor to bring attention to fundamental freedoms and civil rights that protesters felt his presidency could put in jeopardy.

From the speeches on the center stage to the signs held by marchers, the rally warned how the Trump presidency could endanger rights for women, minorities, gays, and immigrants, as well as how his presidency could threaten the struggle to protect against climate change and other pressing issues.

If you were lucky enough to make your way to the center stage, you would have witnessed motivational speeches from celebrities, past and present. Film director Michael Moore encouraged people to get involved in the political process. Women's movement icon Gloria Steinem spoke passionately, stressing the importance of women sticking together and taking time to really get to know one another. Actress Ashley Judd gave an unrestrained speech about Trump's illicit behavior towards women.

Actress Scarlett Johansson spoke directly to the day-old president, "President Trump, I did not vote for you," she continued. "I want to be able to support you. But first I ask that you support me. Support my sister. Support my mother. Support my best friend and all of our girlfriends." Singer and actress Janelle Monae introduced *Mothers of the Movement*, a group of women whose African American children have been killed by violence, usually at the hands of police. Actress America Ferrera spoke about the increasing challenges facing immigrants: "But the president is not America. His cabinet is not America. Congress is not America. We are America! And we are here to stay." In this troubling time for human rights, her words remind us that we, the people, are the ones that make up America.

Even as a person who could not get to the center of the action to hear the speakers, it was a very inspiring experience. Younger people, older people, and everyone in-between had turned out for the same purpose as had

marchers across the country and throughout the world. We were all there for the same reason: to stand up and fight for basic human rights. As Americans, we were also fighting to protect our constitutional rights - our rights to equality, justice, and the pursuit of happiness.

Everywhere you looked were the pink cat-eared hats created as a representation of solidarity, empowerment, and support for women's rights. Everyone was very upbeat and friendly, smiling at each other as we passed by. You could really feel the community coming together. It was especially heartwarming to see so many people holding signs expressing support, not for their own rights, but for the rights of others.

Among the most memorable signs were those worn by a young girl and boy holding hands. The girl's sign read '80 Cents' and the boy's sign read '\$1.00'.

In addition to the signs, protesters expressed their views through chants. The chants I heard the most was "Love Trumps Hate!" "Not My President!" The chanting echoed as it spread throughout the crowd, adding to the feeling of joint purpose and unity.

The events on stage were broadcasted live on TV everywhere. So, when we stopped for lunch I actually got to see and hear what was happening at the center of all

the excitement. Even as we were leaving, we could feel the enthusiasm of everyone around us. We could also sense just how large the crowds were when we tried to go home on the metro. Just trying to approach the station became a nightmare - even for someone without claustrophobia. When we finally got on the metro, the car seemed darkened and our vision was so blocked that you could barely see the people in front of you.

But the experience was well worth any inconvenience brought by the mammoth crowds. And while some might view the Women's March as an assault on President Trump, I don't. Rather, I experienced the March as a group of people coming together to fight for people's rights. It also served as a reminder that together, we are unstoppable. Overall, the Women's March was an inspiring and uplifting experience that will go down in history books as an amazing event!



*Signs at 2017 Women's March on Washington photo taken by Sondra Frank*

Citation: <https://www.google.com/amp/s/mobile.nytimes.com/2017/01/21/us/womens-march.amp.html>

# DuFief Homes Association

**DuFief Homes Association Board**  
board@dufief.org 240-242-9678

**Mailing Address:**  
PO Box 3034  
Gaithersburg, MD 20885

**www.dufief.org**



## **DuFief HOA Board of Directors:**

**President:** Eli Hassid — emhassid@gmail.com  
**Vice President:** Nathalie Noon — nathalienoon@gmail.com  
**Treasurer:** Brian Frank — schmedbrf@yahoo.com  
**Secretary:** Oksana Klebs — oroz@loc.gov

## **Board Members:**

Pam Weld — jackpam84@gmail.com  
William Washington — bobmotku@gmail.com  
Keith Shenk — shenk24@gmail.com  
Linde Fuller — (*Readwood Editor*) fullersk@verizon.net  
Jean-Louis Staudenmann — (*ARC Committee Chair*) jlst@nist.gov

## **ARC Committee Members:**

Pooja Rathore — pkrathore@gmail.com  
Lisa Li — lisaliloan@yahoo.com

**Webmaster:** Barbara Brenkworth — brenkworth@gmail.com

## **In Memoriam**

It is with sadness that we announce the death of Elmer Klebs on August 16, 2016. He had been a member of the DuFief ARC Committee since February 2016, even though his illness made it difficult for him to participate fully. He was especially concerned about making public sites accessible to the disabled. Oksana Klebs, his wife, was elected to the Board this past February and she will carry on her husband's mission (see introduction on page 4).

We offer our sincere condolences to Oksana and her son Robert.

### **DuFief HOA Board**

**Note:** The *Readwood* was printed at cost as a community service by **Alpha Graphics Shady Grove** in Gaithersburg (agshadygrove.com).

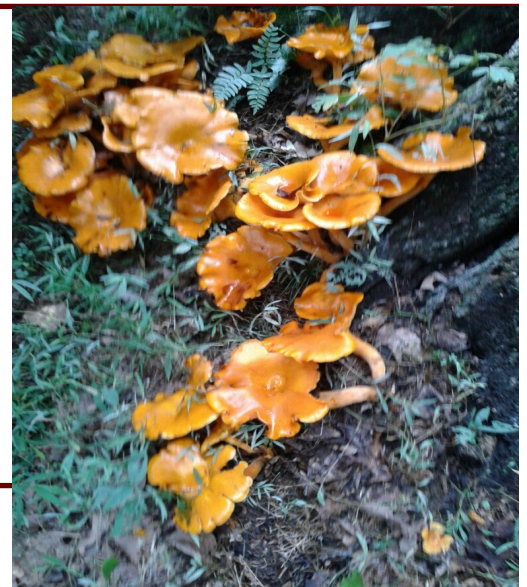


Photo courtesy of Laura Huff  
(Mushrooms growing in Laura's backyard)