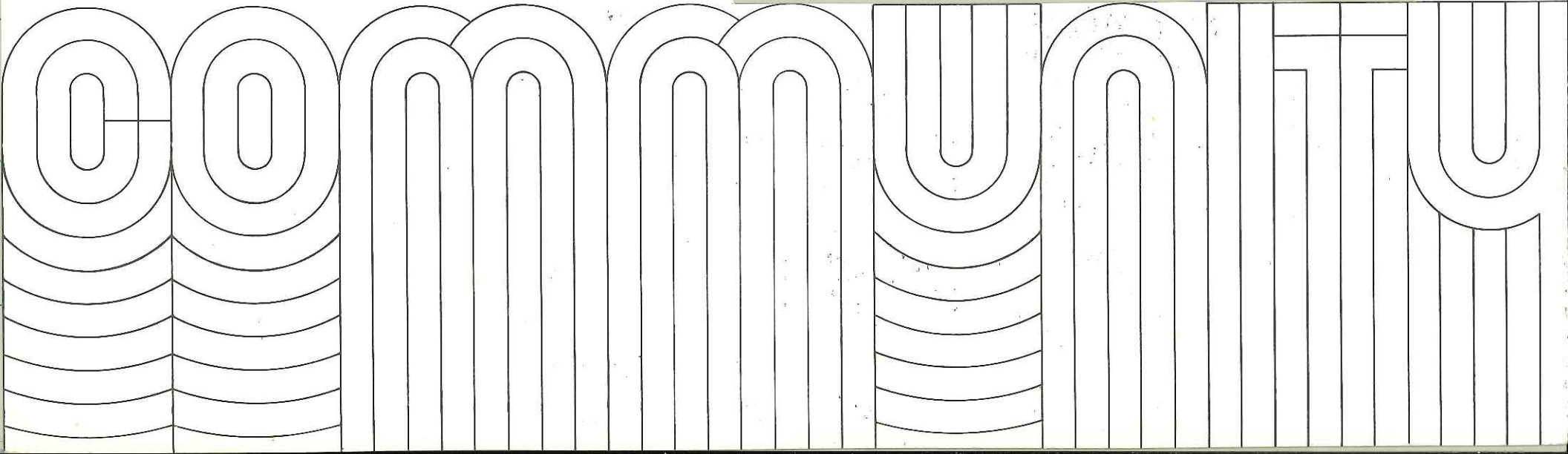




**MILLER  
AND SMITH**

**DUFFE**

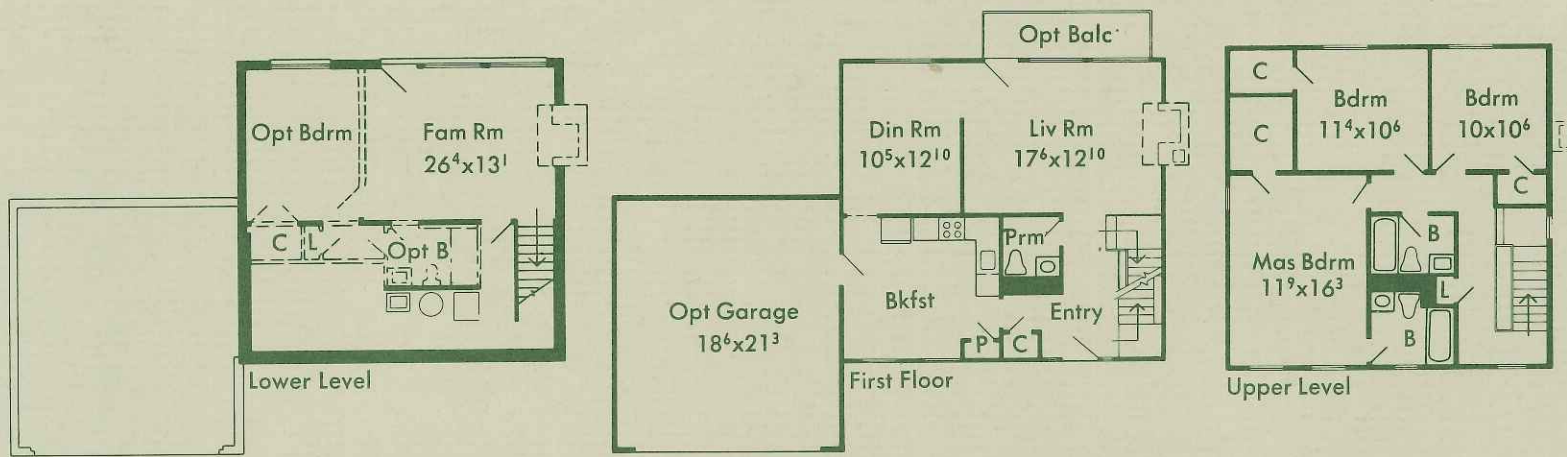




Three hundred and sixty some years later. A chance to do a little pioneering, nineteen seventies style. To make your investment in the land and watch it grow with the community. To plant your family's roots in the farms and pastures of yesterday and let them mature freer and fresher with tomorrow.

DuFief is just beginning. A chance to get in on the ground floor. And watch your home and your future take shape. A handsome masonry and cedar contemporary design built to blend with good old days nature. On your own half acre of green earth and blue sky. Clustered with others to create community parkland. Open space. A friendly neighborhood feeling. Just far enough from city noise and traffic to let you hear the birds sing. Yet still close to all the conveniences that make living easy. Now is the time to listen to your thrifty pioneer spirit. As DuFief grows, so must our prices.

DUFIEF



The Brightwood invites you to make yourself at home. Its open entry hall gives way to an exposed riser up-and-down staircase on one hand and a convenient guest closet on the other. Take a giant step forward to the powder room. Or a couple of sideways scissors steps into the kitchen. While you're there, check out the pantry closet, sizeable breakfast space, oven range that cleans itself and the refrigerator that never frosts up. Note its L-shaped food preparation area—no traffic to interrupt Mom's meal-making. Once in the dining room,

# Brightwood

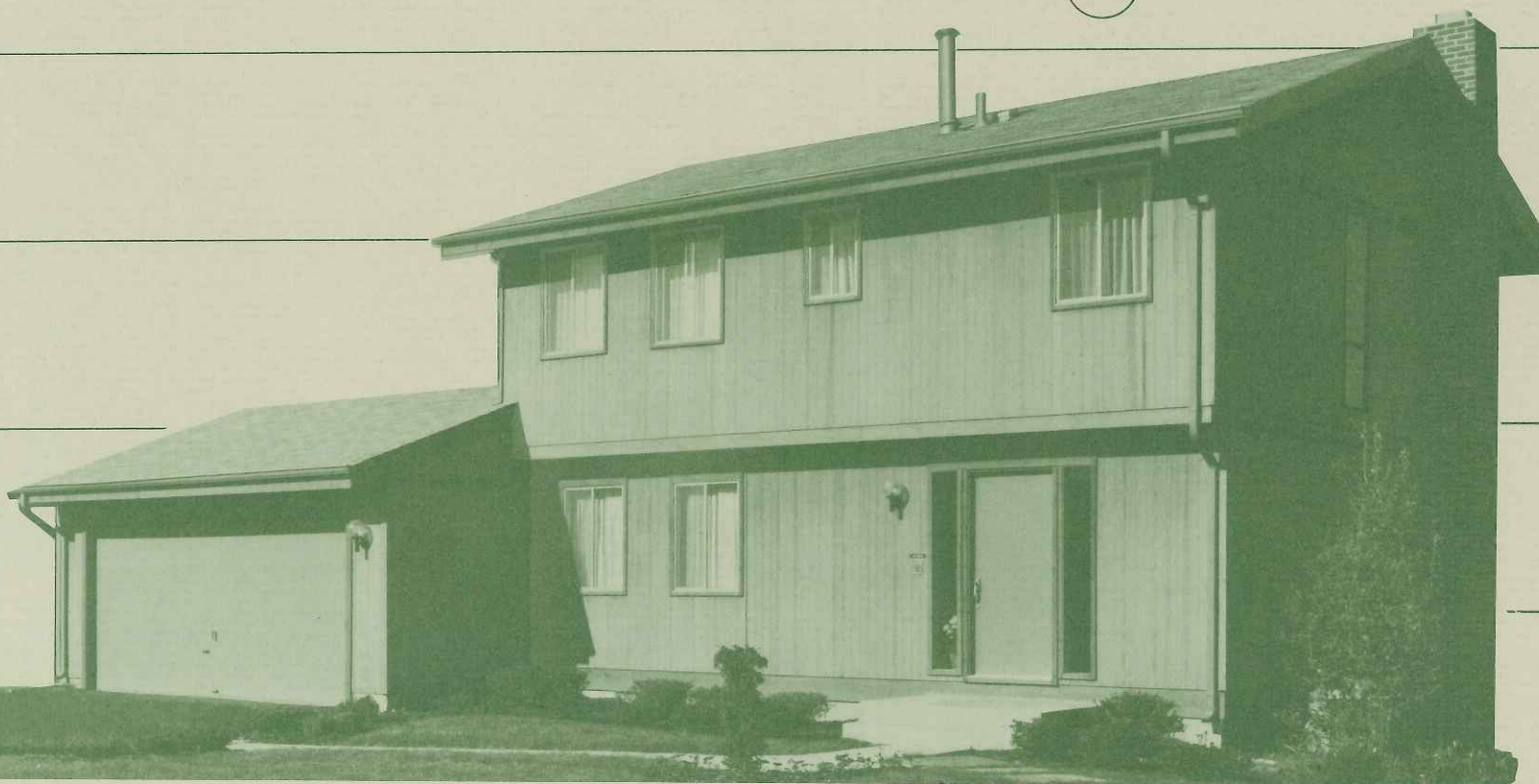
you can almost visualize a pleasant family dinner or a formal buffet. A quick step around the separating partition reveals the natural flow of space into the living room. Who can fail to conjure up a relaxing

midsummer's night on the available or optional adjoining balcony. Upstairs are two twin-size bedrooms, served by a full bath just across the hall, and a master suite that includes a closet big enough to walk into, and its own

full bath. For overflow parties, the 26' family room with direct access to the great outdoors is located just down from the living room. In addition, on this level you may also select a fourth bedroom and third

bath to create an ideal guest apartment. If you opt for the garage, you get 19x21 feet of car, bike and weekend handyman space that should be enough for any one man's family. A home for all

seasons, it's air-conditioned, of course.



STANDARD  
HIGH QUALITY  
FEATURES  
IN  
MILLER & SMITH  
HOMES  
AT  
DUFIEF

**KITCHEN**

- G.E. self-cleaning oven
- G.E. 14.7 cu. ft. 2 dr. frost-free refrigerator
- G.E. dishwasher and disposal
- Stainless steel sink
- Single lever faucet

- Range hood vented outside

**BATHS**

- Combination fiberglass tub-shower in all baths
- Integral marbelite lavatories
- Custom built vanities
- 50 gallon glass-lined water heater
- Single lever faucets

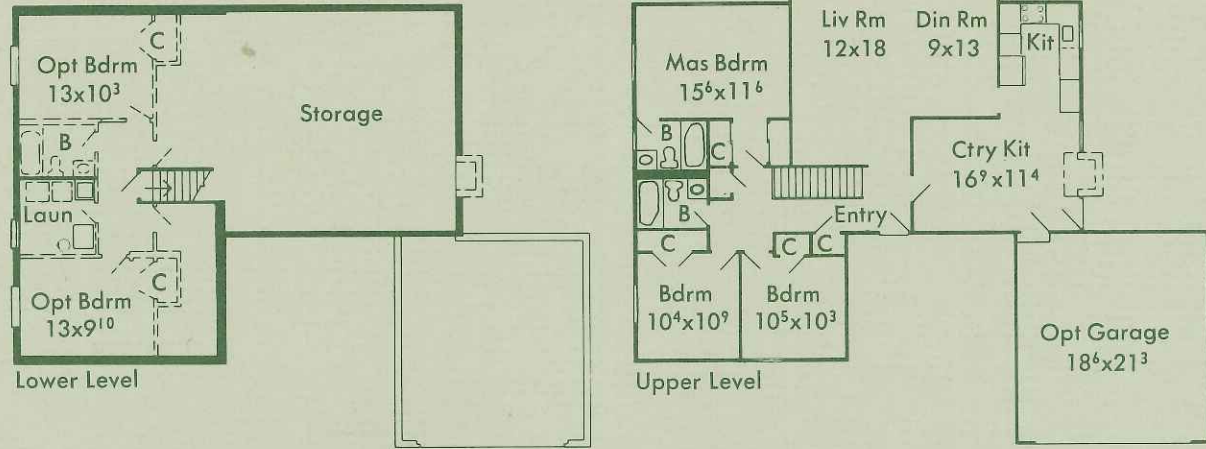
**OTHER  
QUALITY FEATURES**

- Central air-conditioning and heating
- Carpeting wall to wall
- Cathedral ceilings
- Fully insulated walls and ceilings
- Warp-free insulated exterior doors
- Vinyl wall paint

- Wooded parkland
- 220 Volt clothes dryer outlet and exhaust vent
- Foundation planting
- Sodded and hydroseeded lawns
- Window screens
- Solid Mahogany handrails

- Underground wiring and utilities
- Seal-tab shingles
- Pre-wiring for three telephones
- Five Year warranty against termites

# Knollwood



Once inside the front door of the Knollwood, you may never want to leave home. The entire expanse of interior space is organized for maximum living convenience. The central entry hall with closet leads

feeling. The kitchen puts everything at your fingertips, including a stainless steel sink, dishwasher and disposal. For informal fireside suppers, the family room is right in front. Whether Mom's practicing the latest

bedrooms. Downstairs, expandable space may be finished into fourth and fifth bedrooms, or recreation room, now or in the future, and a third full bath and enough space left over for a workshop and pool

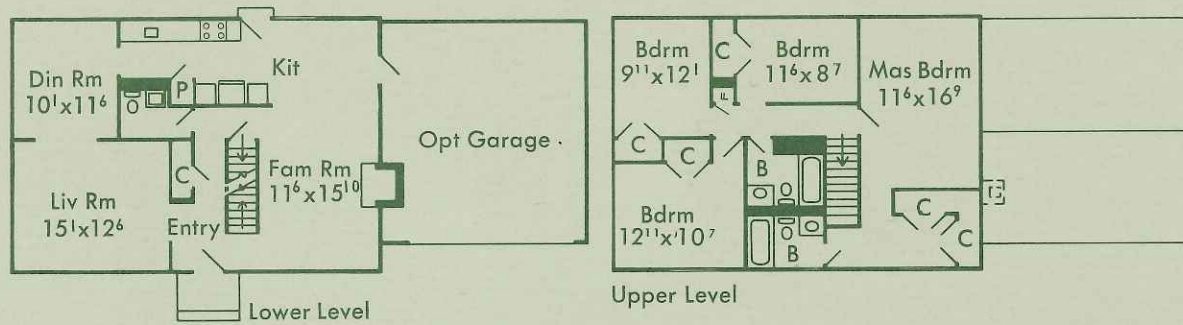
directly to the bedroom area, to the downstairs areas, into the country kitchen, or straight ahead to the generously windowed living and dining rooms. A cathedral ceiling adds to the light, airy

gourmet delight on Dad and the kids, creating an old family recipe for special guests, or hosting a brownie scout somores roast, there's plenty of room for everything. The master suite features double closets

table. Comfortably air conditioned.

that could be just the thing to save a marriage, and a private master bath. A second full bath is around the corner, next to two additional





# Parkwood

Plenty of places to live it up have been built into the Parkwood. Along with enough closet and storage space to satisfy the most impeccable homemaker or the most chronic Fibber McGee. A grand

the morning after, you need only flip a switch and 8¢ of electricity will clean your oven. Upstairs, four nice bedrooms all feature oversize closets. The master suite includes a his-and-hers pair, plus a private

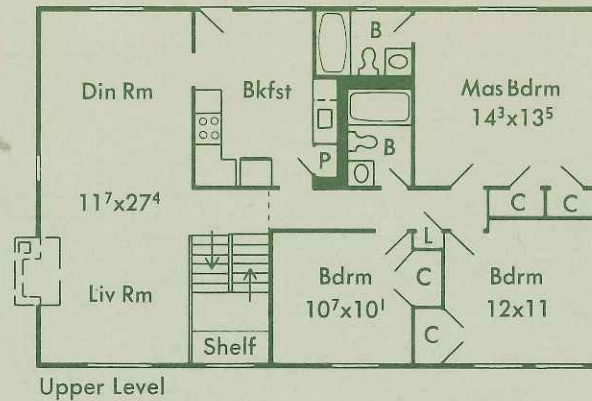
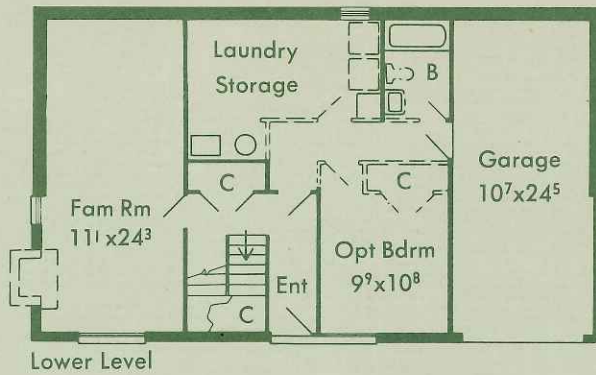
entrance features guest closet and out-of-the-way powder room. Guests may be channeled directly into the family room or into the formal living/dining room for a pre-feast round of hors d'oeuvres. The L shape

bath. A linen closet also serves the second full bath and the remaining bedrooms can each accommodate a four-poster, a crib plus daybed, all the fixings for a great den, or all the paraphernalia for a sewing

effectively hides all dinner preparations. On party night, the kids can be fed easily in the kitchen, which has enough cabinet and pantry space to stock two of everything with room to spare. On

room. A full basement provides plenty of space for laundry, storage, work space, and the ping-pong table. Air conditioned, of course.





Floor to ceiling windows abound in the dashing Springwood, letting the sun shine in and the inside shine out. Its dramatic lower level entry leads easily into the family room where teenagers can flop unobtrusively or the bridge club can be entertained undisturbed. A double hall closet holds boots, bats, and overcoats with room to spare. And for spare rooms to come, the space for an optional fourth bedroom and third full bath await. Laundry and storage facilities are right there too,

# Springwood

and down the hall, direct access to an oversize garage. Once you park your big American model, you'll still have room for a couple of scooters or half a land rover. On the way upstairs, your favorite first

grader will discover the perfect spot for hide-and-seek. (To the average adult, it's simply great understairs storage.) The upper level opens up to 27 feet of cathedral ceiling dramatically linking a gracious living

and dining room that invites romantic candlelight buffets as well as informal, just-for-fun gatherings. Breakfast in front of a great window in your convenience-packed, pantried kitchen. Down the hall, an

almost square master bedroom offers endless possibilities for arrangement, including a cozy reading area. A pair of closets makes it easy to separate pants suits from suit pants, and a private

master bath makes it easy to slip away for a soak. Second and third bedrooms have ample closet space and their own full bath. Air conditioned, because you prefer it that way.

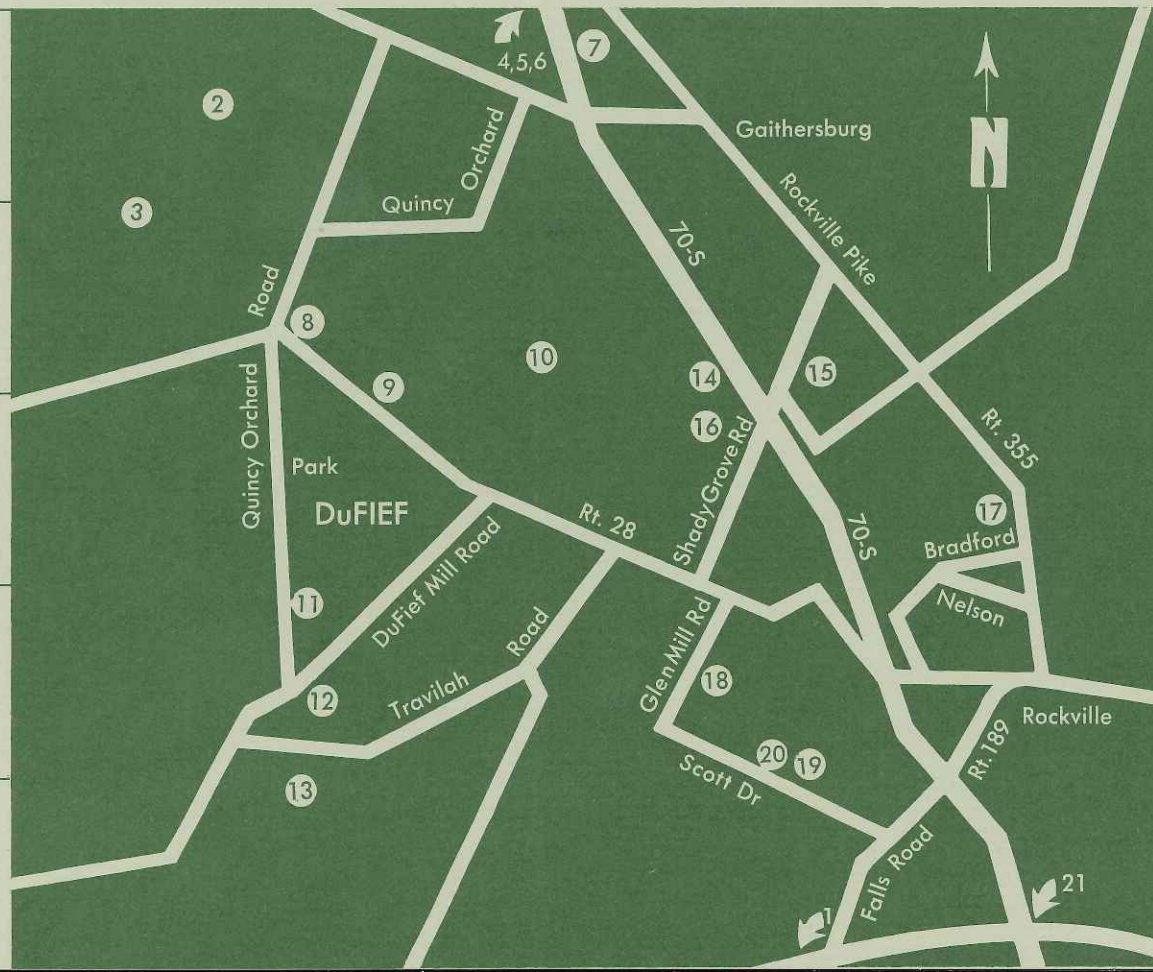


When the sun sets on DuFief it sinks below the woods and wild flowers of permanently preserved parkland. Bordering its entire western boundary, this land is scheduled by the Maryland National Capital Park and Planning Commission to become a major regional park.

Inside the community, natural areas surround a quaint, weathered dam and an old fashioned fishing pond. Land has been set aside for DuFief's own elementary school. And, just down the road apiece, Robert Frost Junior High and Wootton Senior High are well into the business of educating older brothers and sisters.

Its location a few miles west of Rockville puts DuFief off the beaten track but still close enough for all the comforts of nearby shopping, employment, recreation and other pleasant diversions.

*(directions)*  
 Drive out 70-S  
 to the Route 28 interchange at  
 Rockville. West on Route 28  
 four miles to DuFief.



- 1 Falls Road Public Golf
- 2 Great Seneca State Park
- 3 National Capital Gun Club
- 4 AEC
- 5 Fairchild
- 6 Comsat
- 7 IBM
- 8 Neighborhood Shopping
- 9 National Geographic
- 10 National Izaak Walton Park
- 11 Potomac Horse Center
- 12 Travilah Elementary
- 13 Potomac Walton Gun Club
- 14 Washingtonian Country Club
- 15 Danac Industrial Park
- 16 Shady Grove Music Fair
- 17 Montgomery Jr. College
- 18 Lakewood Country Club
- 19 Wootton Senior High
- 20 Robert Frost Jr. High
- 21 Montgomery Mall  
Regional Shopping Center