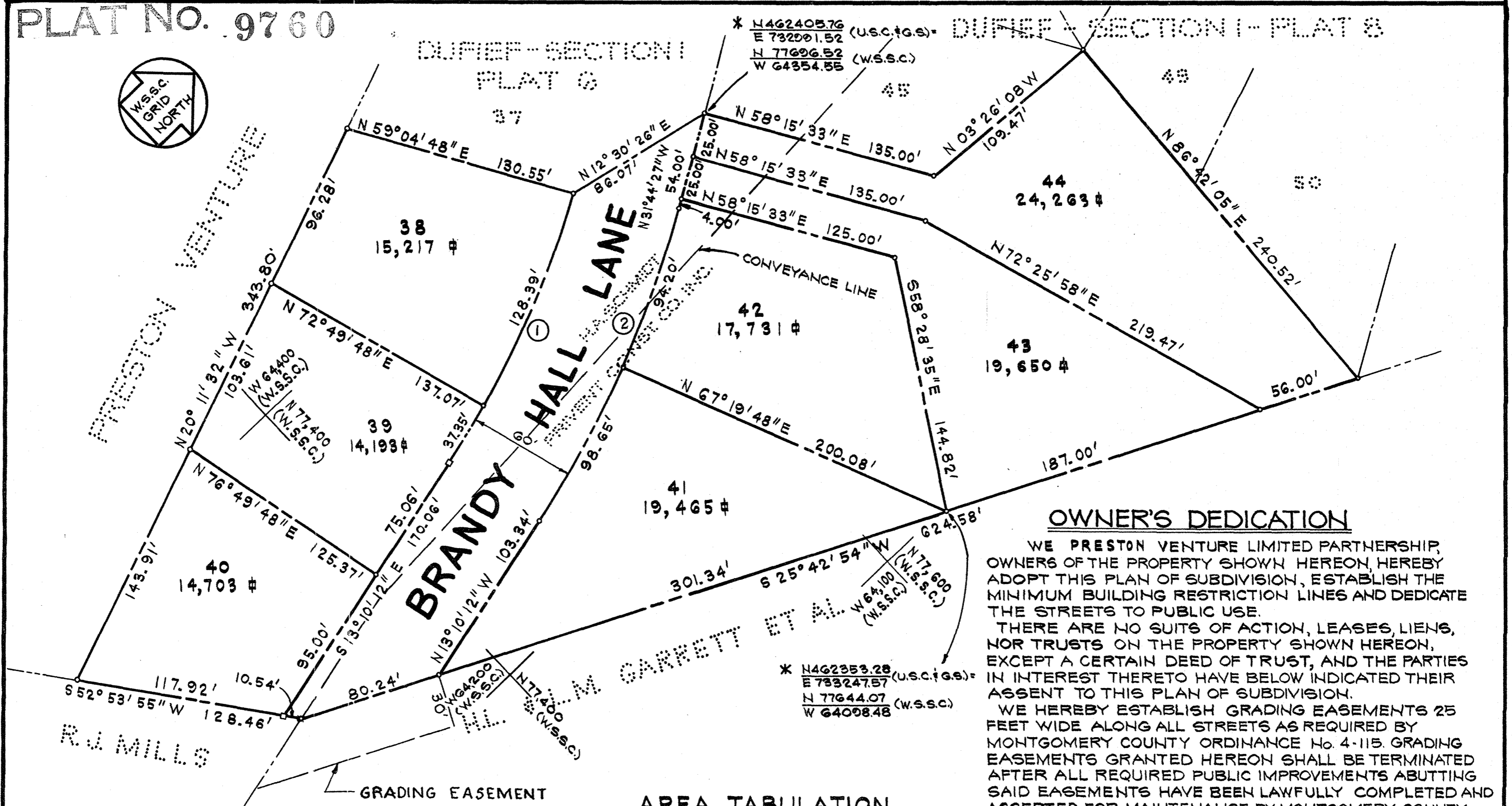


PLAT NO. 9760



OWNER'S DEDICATION

WE PRESTON VENTURE LIMITED PARTNERSHIP, OWNERS OF THE PROPERTY SHOWN HEREON, HEREBY ADOPT THIS PLAN OF SUBDIVISION, ESTABLISH THE MINIMUM BUILDING RESTRICTION LINES AND DEDICATE THE STREETS TO PUBLIC USE.

THERE ARE NO SUITS OF ACTION, LEASES, LIENS, NOR TRUSTS ON THE PROPERTY SHOWN HEREON, EXCEPT A CERTAIN DEED OF TRUST, AND THE PARTIES IN INTEREST THERETO HAVE BELOW INDICATED THEIR ASSENT TO THIS PLAN OF SUBDIVISION.

WE HEREBY ESTABLISH GRADING EASEMENTS 25 FEET WIDE ALONG ALL STREETS AS REQUIRED BY MONTGOMERY COUNTY ORDINANCE No. 4-115. GRADING EASEMENTS GRANTED HEREON SHALL BE TERMINATED AFTER ALL REQUIRED PUBLIC IMPROVEMENTS ABUTTING SAID EASEMENTS HAVE BEEN LAWFULLY COMPLETED AND ACCEPTED FOR MAINTENANCE BY MONTGOMERY COUNTY.

PRESTON VENTURE LIMITED PARTNERSHIP
BY: MILLER AND SMITH INC., A GENERAL PARTNER

AREA TABULATION

LOTS (7)	125,222 #
DEDICATED TO PUBLIC USE	20,777 #
TOTAL	145,999 #
	OR 3.35168 Ac.

No.	RADIUS	DELTA	ARC	TAN.	CHORD	CHD. BEARING
1	595.00'	17° 45' 00"	165.74'	89.54'	165.08'	S 22° 02' 42" E
2	595.00'	18° 34' 15"	192.85'	97.28'	192.01'	N 22° 27' 23" W

SURVEYOR'S CERTIFICATE

I HEREBY CERTIFY THAT THE PLAN SHOWN HEREON IS CORRECT, THAT IT IS A SUBDIVISION OF PORTIONS OF THE LAND CONVEYED TO PRESTON VENTURE LIMITED PARTNERSHIP, BY THE FOLLOWING OWNERS BY DEEDS DATED JUNE 23, 1970, AND RECORDED AMONG THE LAND RECORDS OF MONTGOMERY COUNTY, MARYLAND AT LIBER 3072 AT THE RESPECTIVE FOLIOS INDICATED:

PRIVENT CONSTRUCTION COMPANY, INCORPORATED ... FOLIO 240
HERMAN A. AND PHYLLIS A. SCHMIDT ... FOLIO 252
I FURTHER CERTIFY THAT IRON PIPES SHOWN THUS — AND MONUMENTS SHOWN THUS — WILL BE SET TO FINISHED GRADE IN ACCORDANCE WITH THE REQUIREMENTS OF SECTION 104-13(E) ORDINANCE 4-115, MONTGOMERY COUNTY, MARYLAND.

DATE: 10/26/70

William O. McIntosh
WILLIAM O. MCINTOSH
MD. REG. No. 5105

RECORDED: _____
PLAT BOOK: _____
PLAT NO: _____

NOTE:
THIS LAND LIES WITHIN AN APPROVED CLUSTER DEVELOPMENT: SUBDIVISION OR RESUBDIVISION IS NOT PERMITTED AND DEVELOPMENT OF THIS LAND IS PERMITTED ONLY IN ACCORDANCE WITH THE LAND USES INDICATED ON THE APPROVED DEVELOPMENT PLAN.

* BEARINGS SHOWN HEREON ARE CALCULATED FROM U.S.C. & G.S. COORDINATES AND MUST BE ROTATED 0° 00' 25.8" LEFT TO CONVERT TO W.S.S.C. BEARINGS.

DATE: 10/26/70

ATTEST: *Gordon V. Smith* BY: *Otis D. Coston, Jr.*
GORDON V. SMITH SECRETARY OTIS D. COSTON, JR. PRESIDENT

TRUSTEE'S ASSENT

WE ASSENT TO THIS PLAN OF SUBDIVISION.

DATE: 10/29/70

Joseph E. Binckhead *Walter Dehmann*
WITNESS *R. B. Cannon* *William A. Caplan*
Eugene M. Ehlers *Vincent A. Sweeney*
WITNESS *Roger Bayley* *William C. Paul Smith*

PLAT 7 FILED
DUFIEF JAN 7 1971
SECTION ONE

ELECTION DISTRICT No. 6
MONTGOMERY COUNTY, MARYLAND

SCALE: 1" = 50' SEPTEMBER, 1970

WILLIAM O. MCINTOSH & ASSOCIATES
PROFESSIONAL ENGINEERS & LAND SURVEYORS
FAIRFAX, VIRGINIA

FOR PUBLIC WATER AND SEWER SYSTEMS ONLY
MARYLAND-NATIONAL CAPITAL PARK & PLANNING COMMISSION
MONTGOMERY COUNTY PLANNING BOARD

APPROVED: November 12, 1970

Caroline Treeland *Thomas A. Dwyer*
CHAIRMAN SECRETARY-TREASURER

M.N.C.P. & P.C. RECORD FILE No. 509-23

MONTGOMERY COUNTY, MARYLAND
DEPARTMENT OF PUBLIC WORKS

APPROVED: Dec. 22, 1970

AS TO ROAD AND STREET GRADES

BY: *Richard J. Lynch*
DEPUTY DIRECTOR OF PUBLIC WORKS