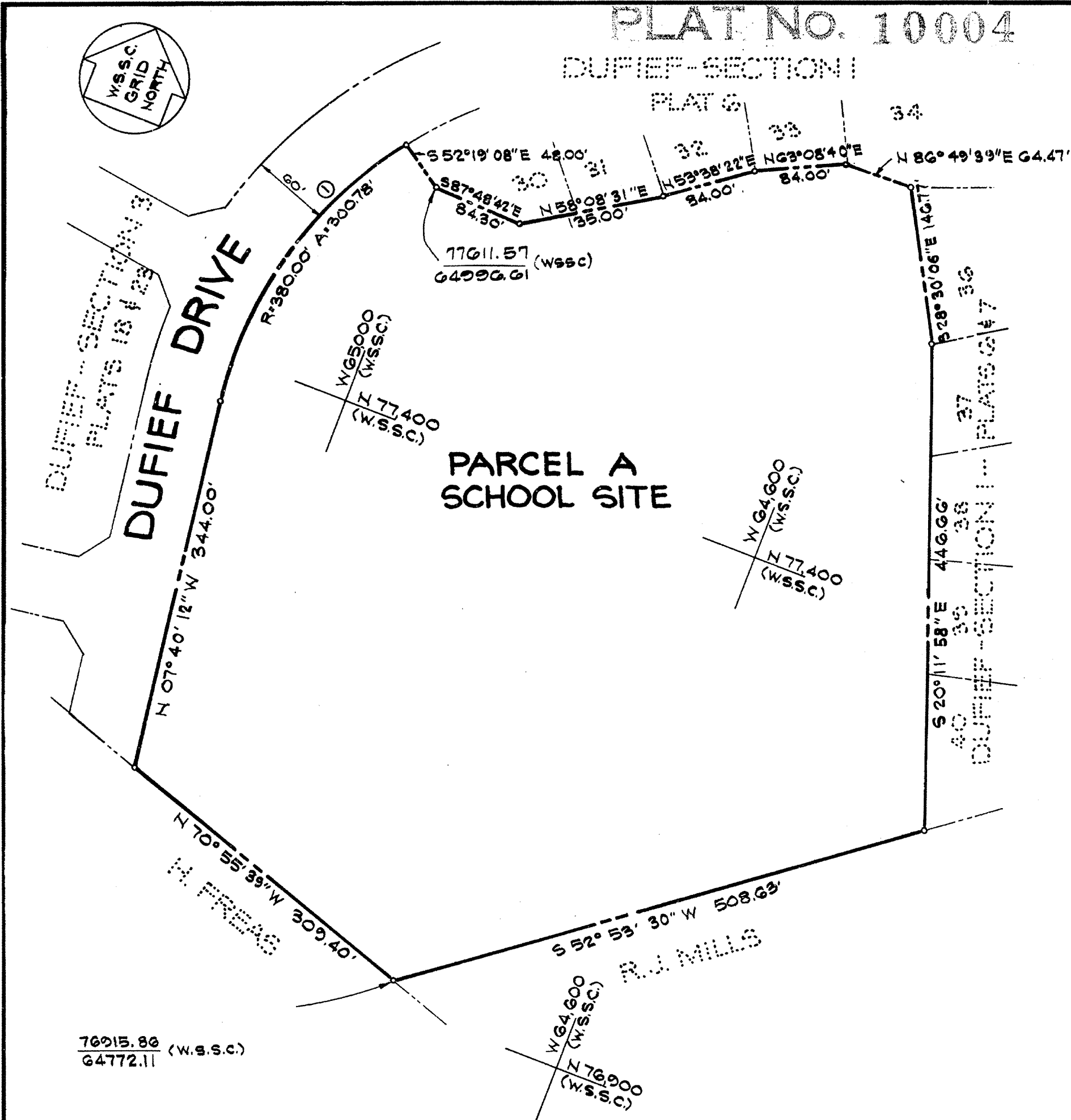


PLAT NO. 10004

DUFIEF-SECTION I

CURVE TABLE						
No.	RADIUS	DELTA	ARC	TAN	CHORD	CH. BEARING
1	380.00'	45° 21' 02"	300.78'	158.76'	292.99'	N 15° 00' 17" E



OWNER'S DEDICATION

WE, PRESTON VENTURE LIMITED PARTNERSHIP, OWNERS OF THE PROPERTY SHOWN HEREON, HEREBY ADOPT THIS PLAN OF SUBDIVISION, ESTABLISH THE MINIMUM BUILDING RESTRICTION LINES AND DEDICATE THE STREETS TO PUBLIC USE.

THERE ARE NO SUITS OF ACTION, LIENS, NOR TRUSTS ON THE PROPERTY SHOWN HEREON, EXCEPT A CERTAIN DEED OF TRUST AND THE PARTIES IN INTEREST THERETO HAVE BELOW INDICATED THEIR ASSENT TO THIS PLAN OF SUBDIVISION.

WE HEREBY ESTABLISH GRADING EASEMENTS 25 FEET WIDE ALONG ALL STREETS AS REQUIRED BY MONTGOMERY COUNTY ORDINANCE No. 4-115. GRADING EASEMENTS GRANTED HEREON SHALL BE TERMINATED AFTER REQUIRED PUBLIC IMPROVEMENTS ABUTTING SAID EASEMENTS HAVE LAWFULLY BEEN COMPLETED AND ACCEPTED FOR MAINTENANCE BY MONTGOMERY COUNTY.

PRESTON JOINT VENTURE, A LIMITED PARTNERSHIP BY: MILLER AND SMITH ASSOCIATES OF VIRGINIA, A GENERAL PARTNER.
DATE: 5/10/71

ATTEST: Gordon V. Smith BY: Otis D. Coston, Jr.
GORDON V. SMITH SECRETARY OTIS D. COSTON, JR. PRESIDENT

TRUSTEE'S ASSENT

WE ASSENT TO THIS PLAN OF SUBDIVISION.

DATE: May 19, 1971

Ernest M. Ehlers William E. Baughman, Trustee
WITNESS
Phyllis C. Beage William E. Baughman, Trustee
Ernest M. Ehlers Vincent A. Sweeney, Trustee
WITNESS Virginia McLean Ward Seligman, Trustee

AREA TABULATION

PARCEL A 435,176 sq ft
OR 9.99027 AC.

NOTE:
THIS LAND LIES WITHIN AN APPROVED CLUSTER DEVELOPMENT, SUBDIVISION OR RESUBDIVISION IS NOT PERMITTED AND DEVELOPMENT OF THIS LAND IS PERMITTED ONLY IN ACCORDANCE WITH THE LAND USES INDICATED ON THE APPROVED DEVELOPMENT PLAN.

SURVEYOR'S CERTIFICATE

I HEREBY CERTIFY THAT THE PLAN SHOWN HEREON IS CORRECT, THAT IT IS A SUBDIVISION OF A PORTION OF THE LAND CONVEYED TO PRESTON VENTURE LIMITED PARTNERSHIP BY HERMAN A. AND PHYLLIS A. SCHMIDT BY DEED DATED JUNE 23, 1970, AND RECORDED AMONG THE LAND RECORDS OF MONTGOMERY COUNTY, MARYLAND IN LIBER 3072 AT FOLIO 252.

I FURTHER CERTIFY THAT IRON PIPES SHOWN THUS —○— AND MONUMENTS SHOWN THUS —□— WILL BE SET TO FINISHED GRADE IN ACCORDANCE WITH THE REQUIREMENTS OF SECTION 104-13(E) ORDINANCE 4-115, MONTGOMERY COUNTY, MARYLAND.

DATE: MAY 15, 1971

William O. McIntosh
WILLIAM O. MCINTOSH
MD. REG. No. 5105

RECORDED: _____
PLAT BOOK: _____
PLAT NO: _____

FOR PUBLIC WATER AND SEWER SYSTEMS ONLY

MARYLAND-NATIONAL CAPITAL PARK & PLANNING COMMISSION
MONTGOMERY COUNTY PLANNING BOARD

APPROVED: June 10, 1971
Caroline Ireland CHAIRMAN
Thomas A. Bangson SECRETARY-TREASURER

M.-N.C.P. & P.C. RECORD FILE No. 511-35

MONTGOMERY COUNTY, MARYLAND
DEPARTMENT OF PUBLIC WORKS

APPROVED: Aug. 11, 1971
AS TO ROAD AND STREET GRADES
BY: Richard J. Lynch
DEPUTY DIRECTOR OF PUBLIC WORKS

PLAT 30
DUFIEF
SECTION FIVE

ELECTION DISTRICT No. 6
MONTGOMERY COUNTY, MARYLAND

SCALE: 1" = 100'

SEPTEMBER, 1970

WILLIAM O. MCINTOSH & ASSOCIATES
PROFESSIONAL ENGINEERS & LAND SURVEYORS
FAIRFAX, VIRGINIA