

CURVE TABLE						
No.	RADIUS	DELTA	ARC	TAN	CHORD	CH. BEARING
1	138.00'	14°10'01"	34.12'	17.15'	34.04'	S82°08'02"E
2	108.00'	9°40'01"	33.41'	16.74'	33.37'	N70°53'00"W
3	506.90'	4°00'00"	35.30'	17.70'	35.38'	S73°02'52"E
4	566.90'	5°00'00"	40.47'	24.75'	40.46'	N72°32'56"W

PLAT No. 9911

NOTE:
THIS LAND LIES WITHIN AN APPROVED CLUSTER DEVELOPMENT SUBDIVISION OR RESUBDIVISION IS NOT PERMITTED AND DEVELOPMENT OF THIS LAND IS PERMITTED ONLY IN ACCORDANCE WITH THE LAND USES INDICATED ON THE APPROVED DEVELOPMENT PLAN.

AREA TABULATION

LOTS (10)..... 139,760 1/2
DEDICATED TO PUBLIC USE 27,041 1/2
TOTAL 166,801 1/2
OR 3.82922 AC.

TRUSTEE'S ASSENT

WE ASSENT TO THIS PLAN OF SUBDIVISION.

DATE: 3-3-71

Emlyn M. Ehlers William C. Paulmyer, Jr.
WITNESS Vincent A. Sweney, Jr.
Emlyn M. Ehlers Ward O. Delunier
Virginia McLean William C. Paulmyer
WITNESS

SURVEYOR'S CERTIFICATE

I HEREBY CERTIFY THAT THE PLAN SHOWN HEREON IS CORRECT, THAT IT IS A SUBDIVISION OF A PORTION OF THE LAND CONVEYED TO PRESTON VENTURE LIMITED PARTNERSHIP BY HERMAN A. AND PHYLLIS A. SCHMIDT BY DEED DATED JUNE 23, 1970, AND RECORDED AMONG THE LAND RECORDS OF MONTGOMERY COUNTY, MARYLAND IN LIBER 3972 AT FOLIO 252.

I FURTHER CERTIFY THAT IRON PIPE SHOWN THUS —○— AND MONUMENTS SHOWN THUS —□— WILL BE SET IN ACCORDANCE WITH THE REQUIREMENTS OF SECTION 104-13(E) ORDINANCE 4-115, MONTGOMERY COUNTY, MARYLAND.

DATE: FEB. 24, 1971

William O. McIntosh
WILLIAM O. MCINTOSH
MD. REG. No. 5195

* NOTE:
BEARINGS SHOWN HEREON ARE CALCULATED FROM U.S.C. & G.S. COORDINATES AND MUST BE ROTATED 0°00'25.8" LEFT TO CONVERT TO W.S.S.C. BEARINGS.

PLAT 19
DUFIEF
SECTION THREE

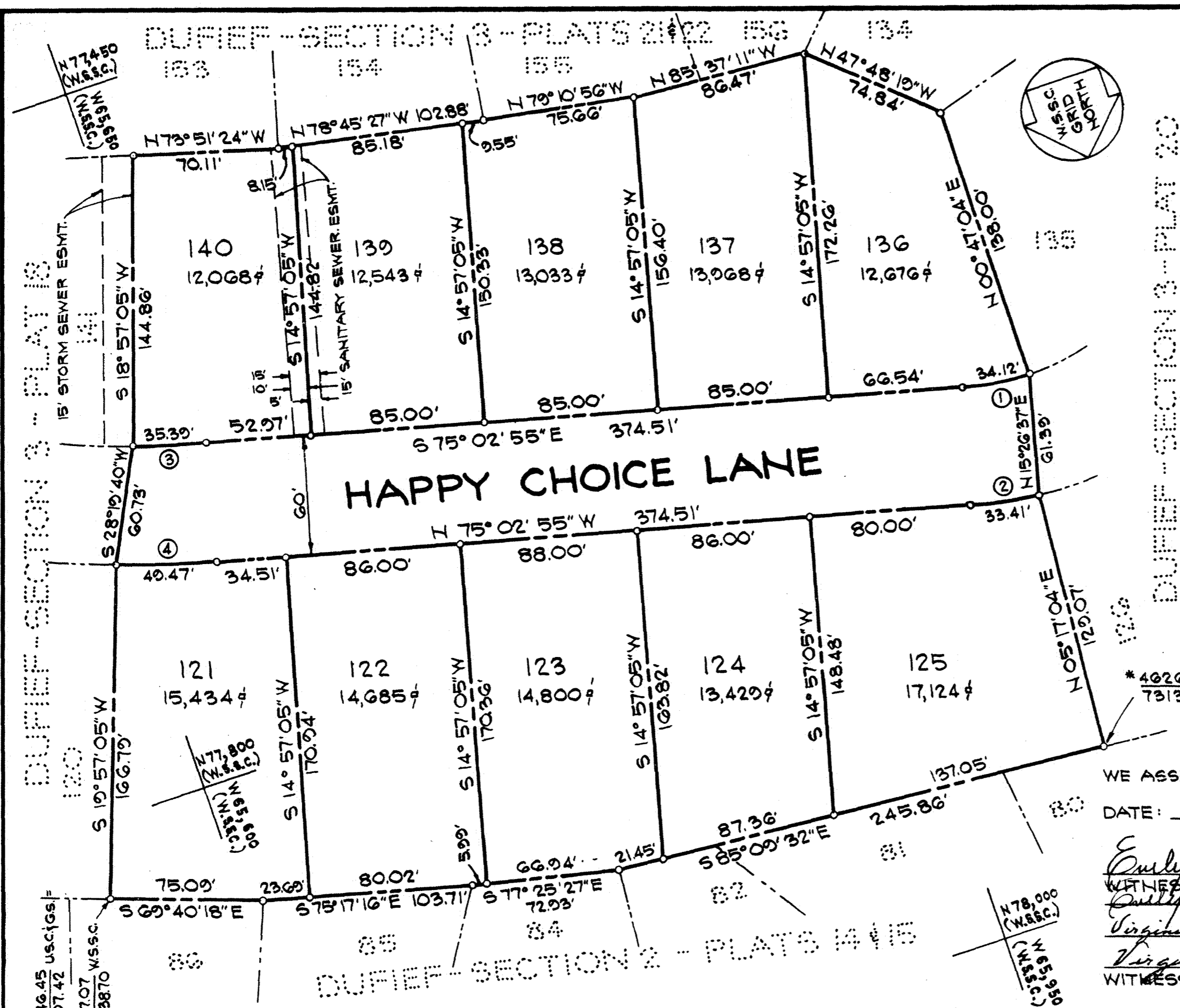
FILED
JUN 2 1971

ELECTION DISTRICT No. 6
MONTGOMERY COUNTY, MARYLAND

SCALE: 1" = 50' JANUARY, 1971

WILLIAM O. MCINTOSH & ASSOCIATES
PROFESSIONAL ENGINEERS & LAND SURVEYORS
FAIRFAX, VIRGINIA

RECORDED:
PLAT BOOK:
PLAT NO.:



OWNER'S DEDICATION

WE, PRESTON VENTURE LIMITED PARTNERSHIP, OWNERS OF THE PROPERTY SHOWN HEREON, HEREBY ADOPT THIS PLAN OF SUBDIVISION, ESTABLISH THE MINIMUM BUILDING RESTRICTION LINES AND DEDICATE THE STREETS TO PUBLIC USE.

THERE ARE NO SUITS OF ACTION, LEASES, LIENS, NOR TRUSTS ON THE PROPERTY SHOWN HEREON EXCEPT A CERTAIN DEED OF TRUST, AND THE PARTIES IN INTEREST THERETO HAVE ABOVE INDICATED THEIR ASSENT TO THIS PLAN OF SUBDIVISION.

WE HEREBY ESTABLISH GRADING EASEMENTS 25 FEET WIDE ALONG ALL STREETS AS REQUIRED BY MONTGOMERY COUNTY ORDINANCE No. 4-115. GRADING EASEMENTS GRANTED HEREON SHALL BE TERMINATED AFTER ALL REQUIRED PUBLIC IMPROVEMENTS ABUTTING SAID EASEMENTS HAVE BEEN LAWFULLY COMPLETED AND ACCEPTED FOR MAINTENANCE BY MONTGOMERY COUNTY.

PRESTON VENTURE LIMITED PARTNERSHIP
BY: MILLER AND SMITH, INC., A GENERAL PARTNER.

DATE: 3-3-71

ATTEST: Gordon V. Smith BY: Otis D. Coston, Jr.
GORDON V. SMITH OTIS D. COSTON, JR.
SECRETARY PRESIDENT

FOR PUBLIC WATER AND SEWER SYSTEMS ONLY
MARYLAND-NATIONAL CAPITAL PARK & PLANNING COMMISSION
MONTGOMERY COUNTY PLANNING BOARD

APPROVED: APRIL 8, 1971

Carolyn K. Freedland Thomas A. Meyer
CHAIRMAN SECRETARY-TREASURER

M.-N.C.P. & R.C. RECORD FILE No. 510-49

MONTGOMERY COUNTY MARYLAND
DEPARTMENT OF PUBLIC WORKS
APPROVED: JUNE 9, 1971
AS TO ROAD AND STREET GRADES
BY: Richard J. Lynch
DEPUTY DIRECTOR OF PUBLIC WORKS