

TRUSTEE'S ASSENT

WE ASSENT TO THIS PLAN OF SUBDIVISION.

DATE: May 5, 1971

Witness signatures: Virginia M. Bean, William C. Bradley, Cynthia C. Neal, William C. Johnston, Virginia M. Bean, Horace D. Alvin

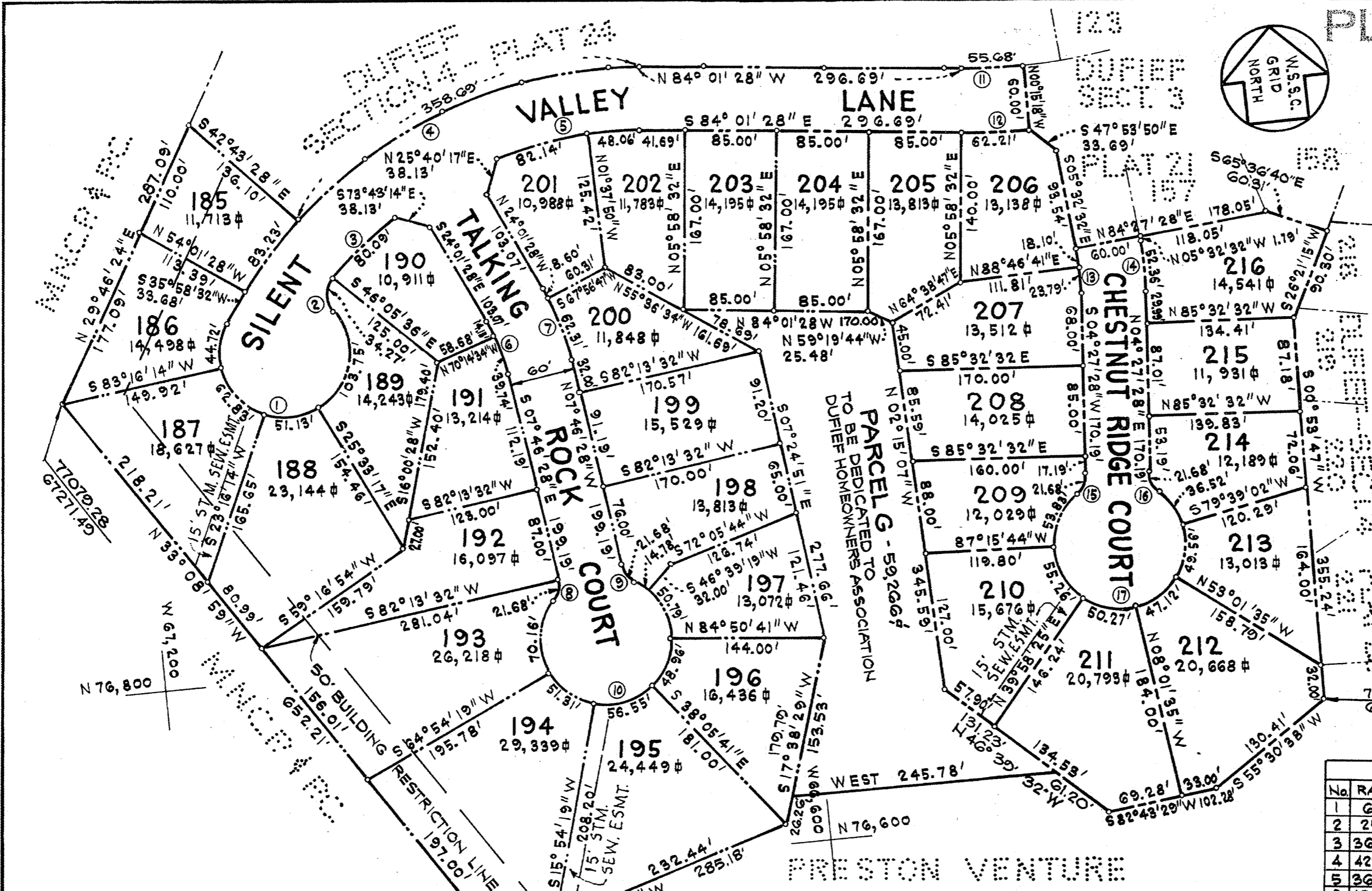


Table with 6 columns: No, RADIUS, DELTA, ARC, TAN, CHORD, CH. BEARING. Contains 17 rows of curve data.

AREA TABULATION

LOTS (32) ..... 420,640 sq ft
DEDICATED TO PUBLIC USE ..... 117,767 sq ft
PARCEL G ..... 59,266 sq ft
TOTAL ..... 676,673 sq ft OR 15,534,27 AC.

OWNER'S DEDICATION

WE, PRESTON VENTURE LIMITED PARTNERSHIP, OWNERS OF THE PROPERTY SHOWN HEREON, HEREBY ADOPT THIS PLAN OF SUBDIVISION ESTABLISH, MINIMUM BUILDING RESTRICTION LINES AND DEDICATE THE STREETS TO PUBLIC USE.

THERE ARE NO SUITS OF ACTION, LEASES, LIENS, NOR TRUSTS ON THE PROPERTY SHOWN HEREON EXCEPT A CERTAIN DEED OF TRUST, AND THE PARTIES IN INTEREST THERETO HAVE ABOVE INDICATED THEIR ASSENT TO THIS PLAN OF SUBDIVISION.

WE HEREBY ESTABLISH GRADING EASEMENTS 25 FEET WIDE ALONG ALL STREETS AS REQUIRED BY MONTGOMERY COUNTY ORDINANCE NO. 4-115. GRADING EASEMENTS GRANTED HEREON SHALL BE TERMINATED AFTER ALL REQUIRED PUBLIC IMPROVEMENTS ADJUTING SAID EASEMENTS HAVE BEEN LAWFULLY COMPLETED AND ACCEPTED FOR MAINTENCE BY MONTGOMERY COUNTY

PRESTON VENTURE LIMITED PARTNERSHIP BY MILLER AND SMITH, INC, A GENERAL PARTNER

DATE: MAY 5, 1971

ATTEST: Gordon V. Smith, Secretary; BY: Otis D. Coston Jr., President

NOTE: THIS LAND LIES WITHIN AN APPROVED CLUSTER DEVELOPMENT SUBDIVISION OR RESUBDIVISION IS NOT PERMITTED AND DEVELOPMENT OF THIS LAND IS PERMITTED ONLY IN ACCORDANCE WITH THE LAND USES INDICATED ON THE APPROVED DEVELOPMENT PLAN.

SURVEYOR'S CERTIFICATE

I HEREBY CERTIFY THAT THE PLAN SHOWN HEREON IS CORRECT THAT IT IS A SUBDIVISION OF A PORTION OF THE LAND CONVEYED TO PRESTON VENTURE LIMITED PARTNERSHIP BY ELIZABETH PRESTON BY DEED DATED JUNE 23, 1970 AND RECORDED AMONG THE LAND RECORDS OF MONTGOMERY COUNTY MARYLAND IN LIBER 3972 AT FOLIO 255

I FURTHER CERTIFY THAT IRON PIPE SHOWN THIS -o- AND MONUMENTS SHOWN THIS -o- WILL BE SET IN ACCORDANCE WITH THE REQUIREMENTS OF SECTION 104-13(E) ORDINANCE 4-115, MONTGOMERY COUNTY, MARYLAND

DATE: MAY 11, 1971

Signature: William O. McIntosh, WILLIAM O. MCINTOSH MD REG NO 5105

PLAT 25 DUFIEF SECTION FOUR

ELECTION DISTRICT No. 6 MONTGOMERY COUNTY, MARYLAND

SCALE: 1" = 100'

MAY, 1971

WILLIAM O. MCINTOSH & ASSOCIATES PROFESSIONAL ENGINEERS & LAND SURVEYORS FAIRFAX, VIRGINIA

RECORDED: PLAT BOOK: PLAT NO:

FOR PUBLIC WATER AND SEWER SYSTEMS ONLY MARYLAND-NATIONAL CAPITAL PARK & PLANNING COMMISSION MONTGOMERY COUNTY PLANNING BOARD

APPROVED: May 20, 1971. Signatures: Carol Ann Freedland (Chairman), Thomas A. Morgan (Secretary-Treasurer)

MONTGOMERY COUNTY, MARYLAND DEPARTMENT OF PUBLIC WORKS APPROVED: July 1, 1971 AS TO ROAD AND STREET GRADES. Signature: R. J. Lynch (Deputy Director of Public Works)